



YASHWANTRAO CHAVAN
ENGLISH MEDIUM SCHOOL -CBSE

Admissions Open *for* 2026-27

**Creative
expression
through**



Nursery to Grade XII

 **022 27550054/7045261674**

 **Plot No. 23, Gyan Vikas Road, Sector 15, Koparkhairane, Navi Mumbai - 400709.**



YASHWANTRAO CHAVAN ENGLISH MEDIUM SCHOOL -CBSE

**ADMISSIONS
OPEN!
2026-27**

**YOUR
FUTURE
BEGINS
HERE.**



Enroll today and take the first step toward a brighter, smarter tomorrow with world-class education and endless opportunities.

Nursery to Grade XII

☎ 022 27550054/7045261674

📍 Plot No. 23, Gyan Vikas Road, Sector 15, Koparkhairane, Navi Mumbai - 400709.



YASHWANTRAO CHAVAN
ENGLISH MEDIUM SCHOOL -CBSE

ADMISSIONS OPEN-2026-27

NURSERY TO GRADE XII

**“LEARNING
THROUGH
PLAY, GROWING
EVERY DAY!”**



022 27550054/7045261674

Plot No. 23, Gyan Vikas Road, Sector 15, Koparkhairane, Navi Mumbai - 400709.



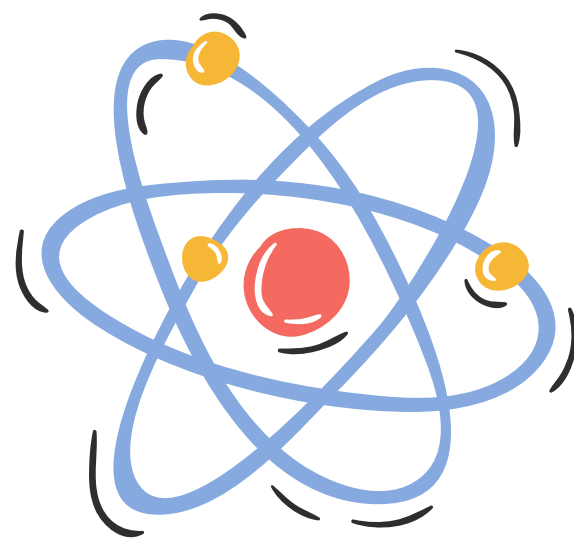
YASHWANTRAO CHAVAN
ENGLISH MEDIUM SCHOOL -CBSE

Admissions Open *for* 2026-27

NURSERY TO GRADE XII



**“EXPLORING THE
WORLD THROUGH
SCIENCE AND
CURIOSITY!”**



 **022 27550054/7045261674**

 Plot No. 23, Gyan Vikas Road, Sector 15, Koparkhairane, Navi Mumbai - 400709.

 ycems.edu.in 



YASHWANTRAO CHAVAN
ENGLISH MEDIUM SCHOOL -CBSE

Admissions Open *for* 2026-27



NURSERY TO GRADE XII

**CREATIVITY IN
EVERY COLOR,
LEARNING IN
EVERY STROKE!**



 **022 27550054/7045261674**

 Plot No. 23, Gyan Vikas Road, Sector 15, Koparkhairane, Navi Mumbai - 400709.

 ycems.edu.in 



YASHWANTRAO CHAVAN
ENGLISH MEDIUM SCHOOL -CBSE

ADMISSIONS
2026-27 OPEN

Yoga & meditation
for focus



NURSERY TO GRADE XII

022 27550054/7045261674

Plot No. 23, Gyan Vikas Road, Sector 15, Koparkhairane, Navi Mumbai - 400709.





YASHWANTRAO CHAVAN ENGLISH MEDIUM SCHOOL - CBSE



SCHOOL ADMISSIONS

**OPEN FOR 2026-27
NURSERY TO GRADE 12**

KEY BENEFITS



**Modern
Facilities**

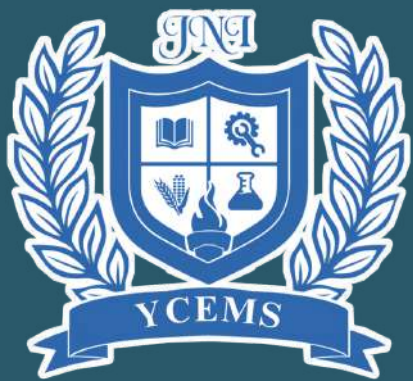


**Professional
Educators**

Join a dynamic learning community with expert teachers and modern facilities. We empower every student with the knowledge, skills, and character for lifelong success.

 7045261674 / 022 27550054

 ycems.edu.in



**YASHWANTRAO CHAVAN ENGLISH
MEDIUM SCHOOL - CBSE**

SCHOOL ADMISSIONS

2026-27

NOW OPEN FOR **REGISTRATION** ➤

NURSERY TO GRADE 12

CBSE
AFFILIATION
NO.: 1130844

➤ Join our school and embark
on a journey of excellence.



Open



Admission Open



Admission Open



Admission open

Admission Open

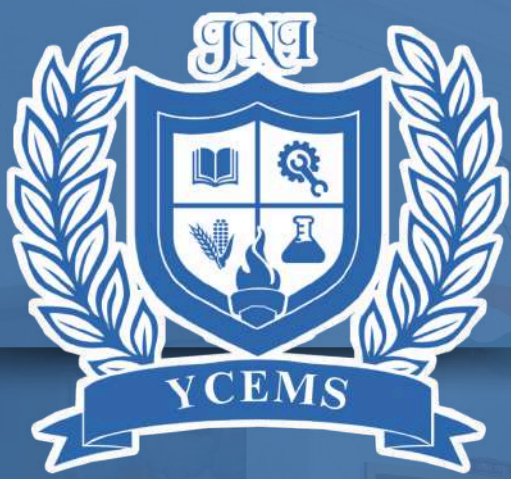


Our Contact

07045261674

022 27550054

- **Excellent curriculum**
- **Modern facilities**
- **Certified Teacher**



CBSE
AFFILIATION
NO.: 1130844

**YASHWANTRAO CHAVAN ENGLISH
MEDIUM SCHOOL - CBSE**

SCHOOL ADMISSIONS

**OPEN FOR 2026-27
NURSERY TO GRADE 12**

Enroll now and provide them with the tools they need to succeed in a supportive learning environment.

✓ **DIGITAL & VISUAL LEARNING**

✓ **AI AND ROBOTICS LAB**

✓ **ACADEMIC MONITORING**

✓ **TRANSPORT FACILITY**



**ENROL
NOW!**

CONTACT US



07045261674/022 27550054



ycems.edu.in



**YASHWANTRAO CHAVAN ENGLISH
MEDIUM SCHOOL - CBSE**

Period 2026 – 2027

SCHOOL ADMISSION

NURSERY TO GRADE 12



MOST AFFORDABLE CBSE SCHOOL



DIGITAL & VISUAL LEARNING



**EXPERIENTIAL & ACTIVITY BASED
CURRICULUM**

ENROLL NOW



Contact Us

07045261674

022 27550054



ycems.edu.in



**YASHWANTRAO CHAVAN
ENGLISH MEDIUM SCHOOL – CBSE**

ADMISSION FOR ACADEMIC YEAR 2026 – 2027

NURSERY TO GRADE 12

**CBSE
AFFILIATION
NO.: 1130844**

OUR FACILITIES :

- ✔ DIGITAL & VISUAL LEARNING
- ✔ VERSATILE SPORTS & PERFORMING ARTS
- ✔ AI AND ROBOTICS LAB
- ✔ ACADEMIC MONITORING
- ✔ TRANSPORT FACILITY
- ✔ CCTV CAMERAS IN ALL CLASROOMS

**Register your child right now at the most
affordable CBSE school, don't miss it.**

ENROLL NOW



Call For Registration
07045261674 / 022 27550054

For More Information
ycems.edu.in





**YASHWANTRAO CHAVAN
ENGLISH MEDIUM SCHOOL - CBSE**

ADMISSIONS OPEN FOR 2026-2027

ENROLL NOW

- ✓ Smart Technology
- ✓ Wide Study Rooms
- ✓ Varied Curriculum
- ✓ Group Activities

CONTACT US



**07045261674
022 27550054**



ycems.edu.in

